

The logo for PureData, featuring the text "PureData" in white on a dark background with a green and yellow geometric pattern of triangles to the right.

PureData

# Research Computing IBM PureData Application Ideas

Matt Gitzendanner: [magitz@ufl.edu](mailto:magitz@ufl.edu)

Oleksandr Moskalenko: [om@hpc.ufl.edu](mailto:om@hpc.ufl.edu)

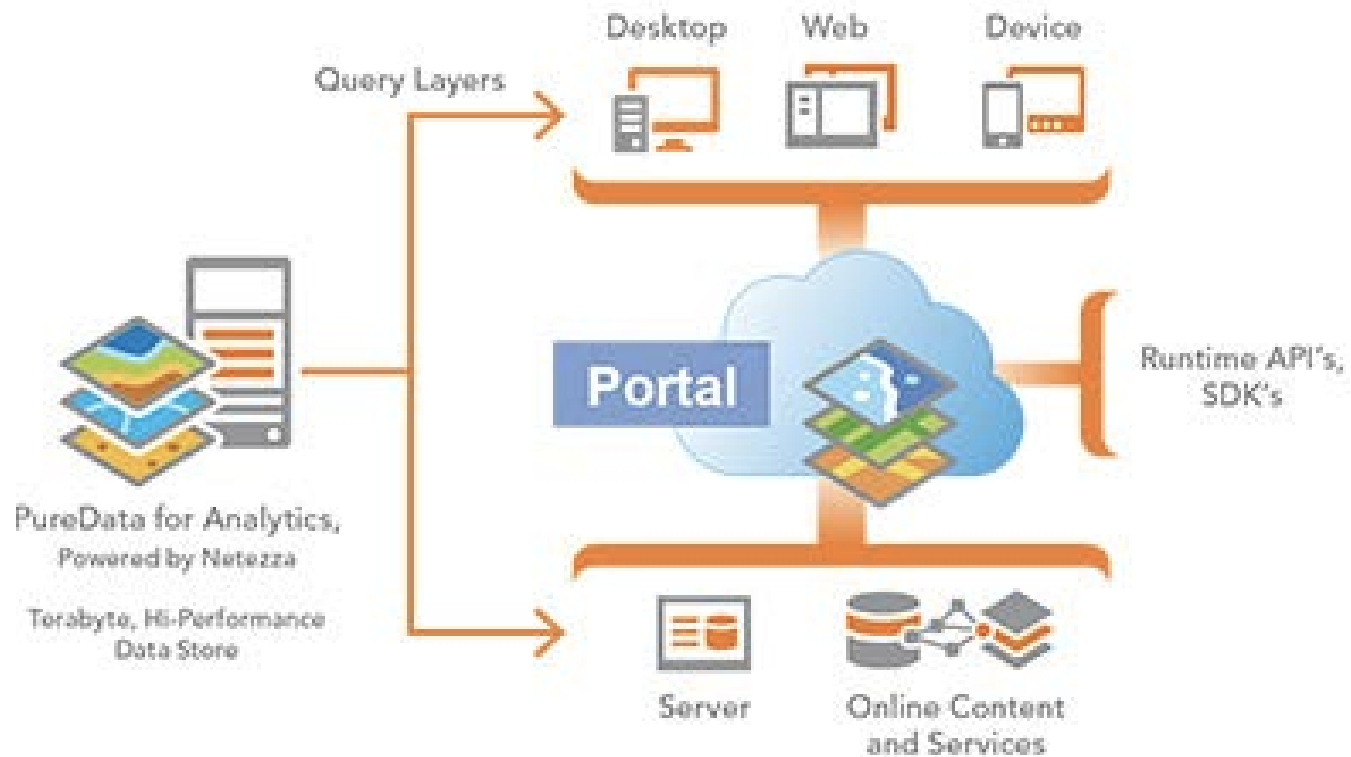
9/25/2014


**UF** | Research Computing  
Information Technology

Home of High-Performance Computing and **HiPerGator**  
The University of Florida Supercomputer for Research

# GeoPlan Center

## ArcGIS System





Making data and images of millions of biological specimens available on the web

22,556,636

Specimen Records

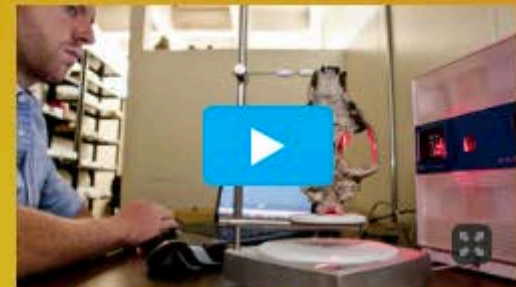
3,232,578

Media Records

337

Recordsets

[Search the Portal](#)



**Why digitization matters**

More about what we do and why



**Digitization**

Learn, share and develop best practices



**Sharing Collections**

Documentation on data ingestion



**Working Groups**

Join in, contribute, be part of the community



**Proposals**

New tool and workshop ideas



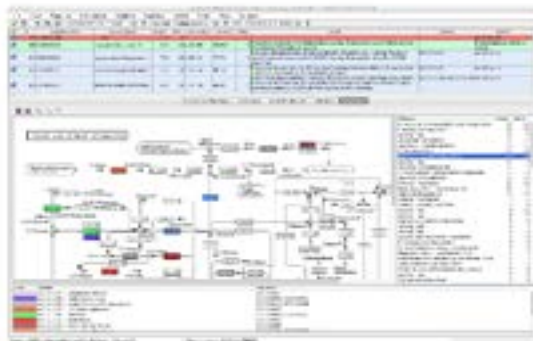
**Citizen Scientists**

How can you help biological collections?



# blast2go

Take a look at Blast2GO

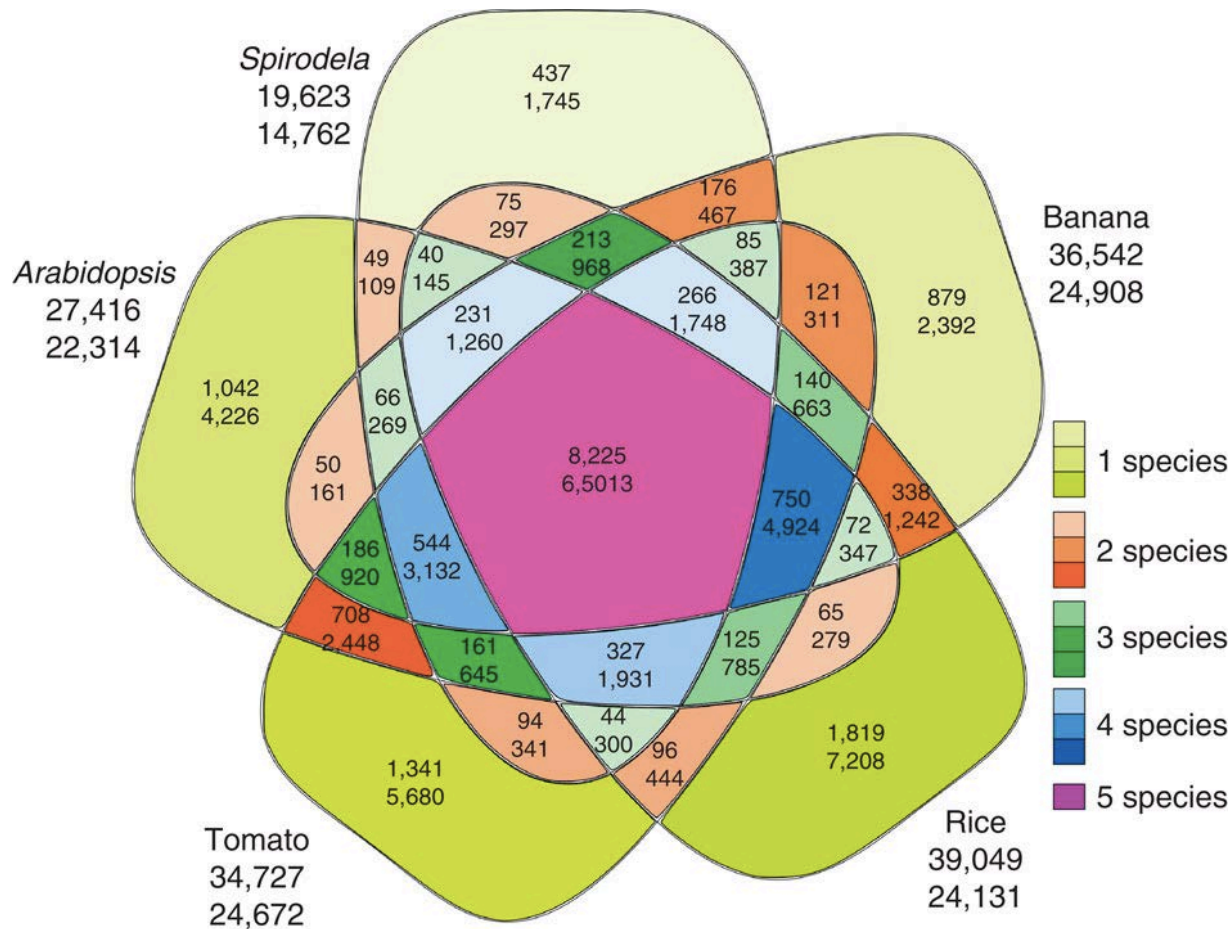




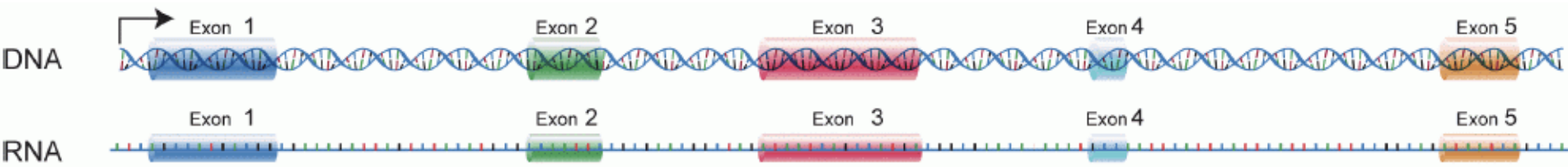


# OrthoMCL DB

Ortholog Groups of Protein Sequences



# Gene Structure Annotation and Analysis Using PASA



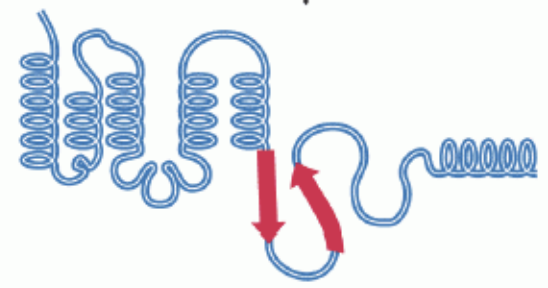
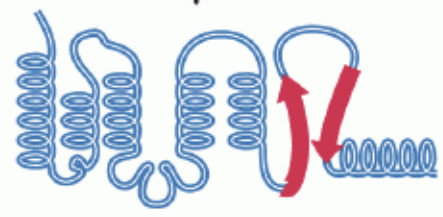
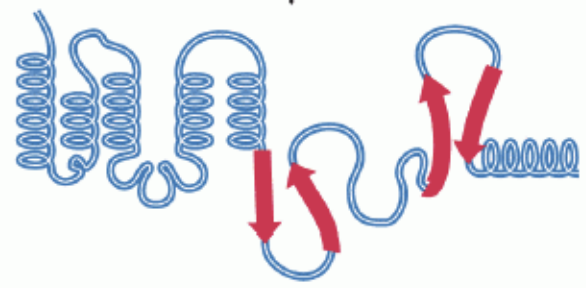
Alternative Splicing



Translation

Translation

Translation



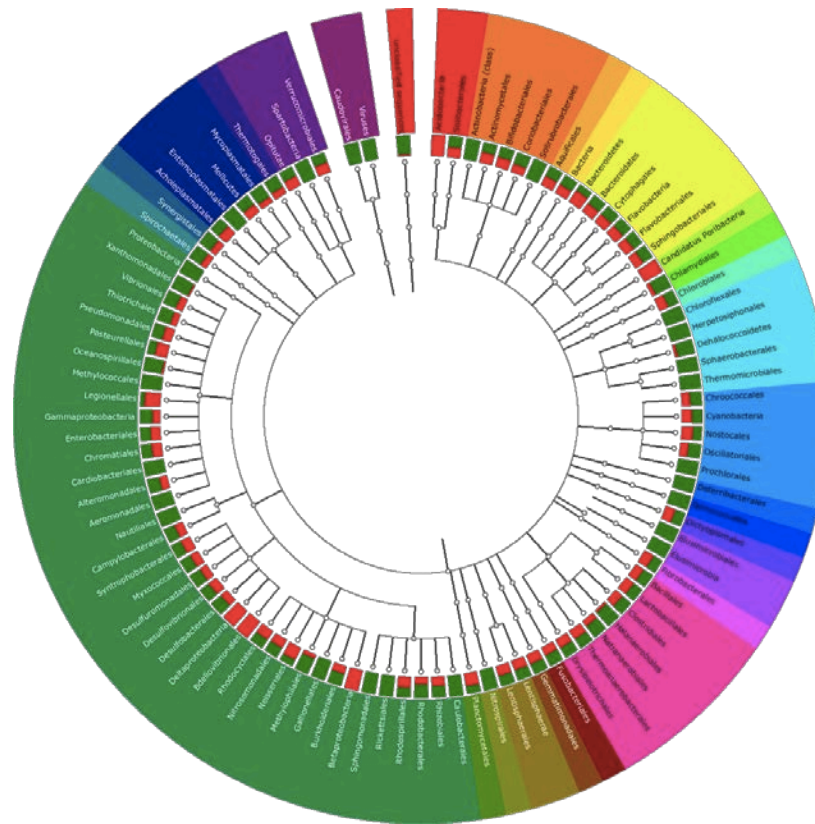
Protein A

Protein B

Protein C

# MG-RAST

metagenomics analysis server



# Collaborations welcome

- ▶ Matt Gitzendanner: [magitz@ufl.edu](mailto:magitz@ufl.edu)
- ▶ Oleksandr Moskalenko: [om@hpc.ufl.edu](mailto:om@hpc.ufl.edu)



# UF Research Computing

- ▶ Help and Support (Continued)
  - <http://wiki.rc.ufl.edu>
    - Documents on hardware and software resources
    - Various user guides
    - Many sample submission scripts
  - <http://rc.ufl.edu/support>
    - Frequently Asked Questions
    - Account set up and maintenance

